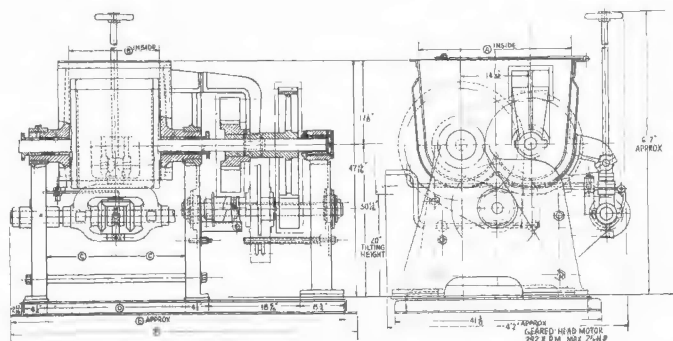


DAY Imperial Kneading and Mixing Machine



NO. 10 IMPERIAL KNEADING AND MIXING MACHINE
TYPE MDC CLASS 6 AND 7



THE Imperial Kneading and Mixing Machine is designed and built to handle heavier pastes and plastics, such as storage battery paste, stiff rubber solutions, putty, furnace cements, welding rod coatings and masses of similar consistency.

• The heavy frame provides a base of satisfactory rigidity. Stuffing boxes are provided on the mixing blade shafts. The blades operate in opposite directions at a two to one ratio, sweeping the entire surface of the tank bottom so that no part of the mass can escape their action. Tank is tilted by mechanical dump.

Size	Type	Working Capacity Gallons	Horse Power			Agitator Speeds		Drive Shaft R.P.M.	Dimensions are in inches						Approx. Shipping Weight	Code Word
			Class 5	Class 6	Class 7	Front	Rear		A	B	C	D	E	F		
10	MDC	30	10	15	30	15	100	30 $\frac{3}{4}$	18	13 $\frac{1}{8}$	27 $\frac{3}{8}$	66 $\frac{1}{4}$	68 $\frac{1}{8}$	3960	MURAL
20	MDC	50	15	25	30	15	100	30 $\frac{3}{4}$	24	16 $\frac{1}{8}$	33 $\frac{3}{8}$	76	74 $\frac{1}{8}$	4175	MURE
30	MDC	75	15	25	30	15	100	30 $\frac{3}{4}$	36	22 $\frac{1}{8}$	46 $\frac{3}{8}$	88	86 $\frac{1}{8}$	5400	MUSE